

POWDER MOUNTAIN WEST SUBDIVISION

PHASE I

LOTS 1-6, 21-24, 27-31

IN WEBER COUNTY

SCALE 1"=50'

TAXING UNIT 90

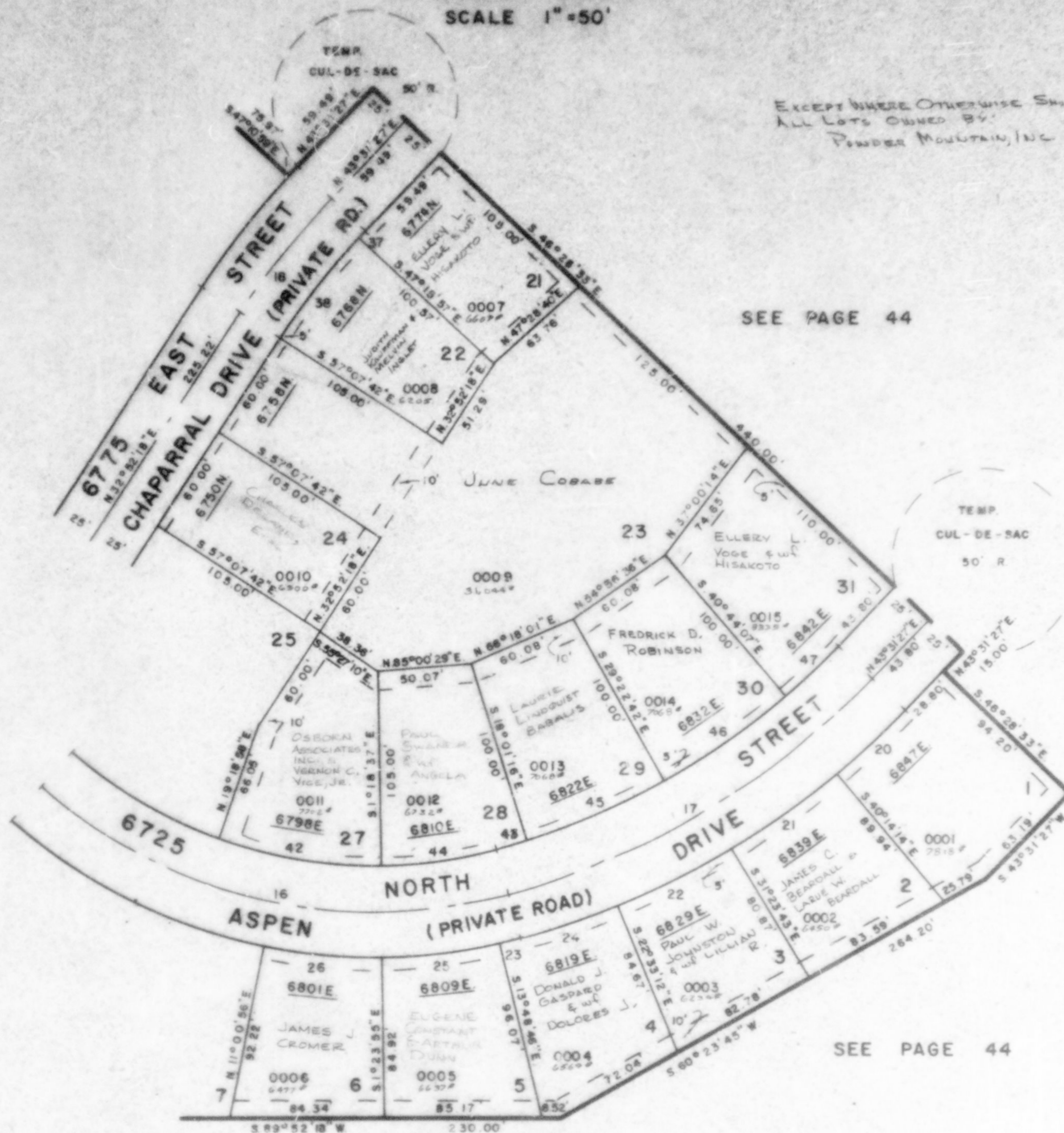
PREFIX 23-085

EXCEPT WHERE OTHERWISE SHOWN
ALL LOTS OWNED BY
POWDER MOUNTAIN, INC.

SEE PAGE 44

SEE PAGE 86

SEE PAGE 44



CURVE DATA

	1	16	17	18	20	21	22	23	24	25	26	37	38	42	43	44
A=	0°42'28"	56°15'00"	31°05'51"	10°39'09"	6°14'19"	6°50'31"	8°50'31"	1°33'56"	7°10'30"	12°24'51"	12°24'51"	0°47'24"	9°51'45"	20°37'35"	2°38'34"	14°04'05"
R=	450.00'	275.00'	428.80'	425.00'	453.60'	453.80'	453.80'	300.00'	453.80'	300.00'	300.00'	400.00'	400.00'	250.00'	403.80'	250.00'
ARC=	5.55'	269.98'	252.82'	79.02'	49.39'	70.00'	70.00'	8.20'	56.80'	65.00'	65.00'	5.51'	68.85'	90.00'	18.62'	61.38'
T=	2.78'	146.99'	119.25'	39.62'	24.72'	35.07'	35.07'	4.10'	28.44'	32.63'	32.63'	2.76'	34.51'	45.49'	9.31'	30.85'
CH=	5.55'	259.27'	229.78'	78.90'	49.36'	69.95'	69.95'	8.20'	56.77'	64.87'	64.87'	5.51'	68.77'	89.51'	18.62'	61.25'
C.B=	N.43°10'14"E.	S.77°05'12"E.	N.59°04'25"E.	N.38°11'53"E.	N.46°38'36"E.	N.54°11'01"E.	N.63°01'33"E.	N.75°24'16"E.	N.71°02'03"E.	N.82°23'40"E.	S.89°11'30"E.	N.43°07'45"E.	N.37°48'11"E.	S.80°59'49"E.	N.73°18'01"E.	N.81°39'20"E.
			45	46	47											
B=	11°21'26"	11°21'25"	5°44'26"													
R=	403.60'	403.60'	403.60'													
ARC=	80.00'	80.00'	40.44'													
T=	40.13'	40.13'	20.24'													
CH=	79.87'	79.87'	40.42'													
C.B=	N.08°18'01"E.	N.56°58'36"E.	N.46°23'40"E.													

FOR COMPLETE ENG DATA
SEE ORIG. DEED. PLAT IN
BOOK 22, PAGE 45